

# VINNO<sup>10</sup>

Go Beyond the Ultrasound Imaging



**VINNO Technology (Suzhou) Co., Ltd.**

5F, A Building, No.27 Xinfu Rd, Suzhou Industrial Park, 215123, China  
Tel: +86 512 62873806  
Fax: +86 512 62873801  
E-Mail: [vinno@vinno.com](mailto:vinno@vinno.com)  
URL: [www.vinno.com](http://www.vinno.com)

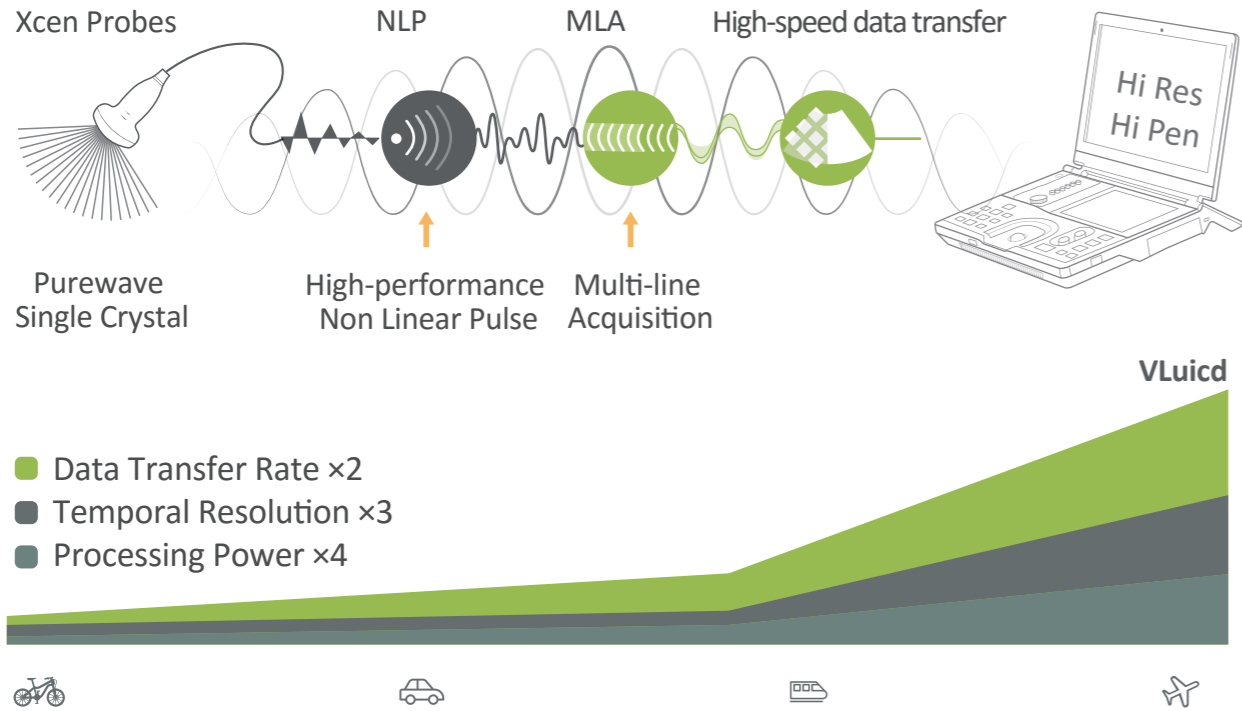
VINNO reserves the right to make changes to product specifications at any time.



General Imaging Version

# Powered by VLucid Platform

Advanced Beam Correction Technology



# Advanced Imaging Technologies

Zone Imaging

Zone Imaging technology acquires better image resolution and energy distribution in entire zone area through apodizing transmission in multiple frequency and instantaneous phase superposition

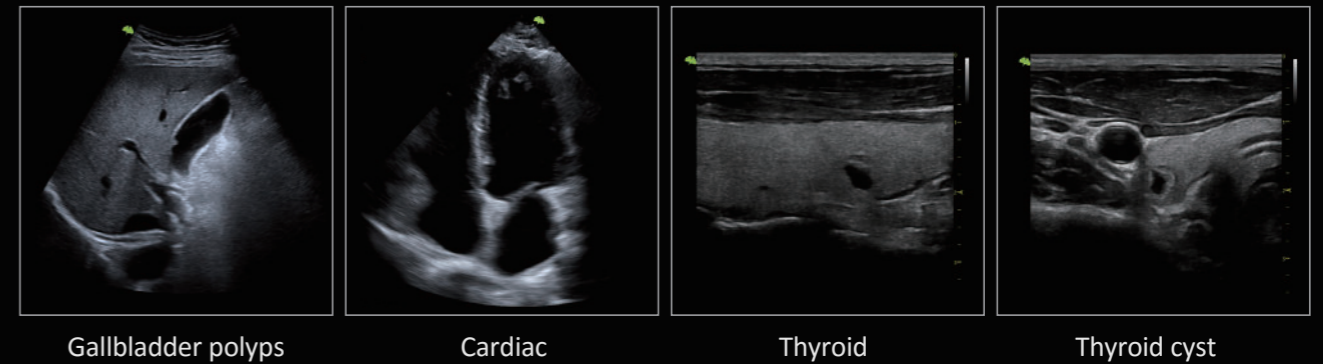


**Partially Focusing (Traditional)**

The energy distributes in dead focus area and attenuates in far field

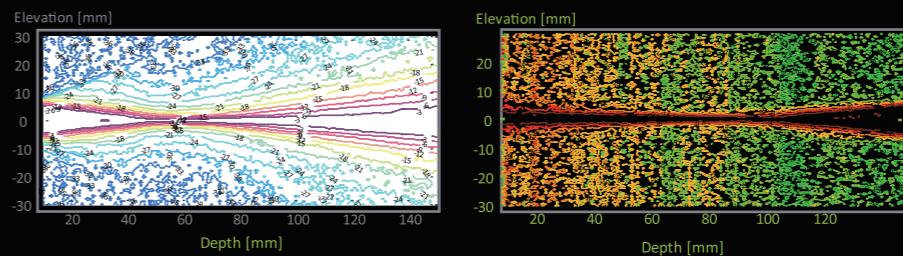
**Focusing In Entire Zone (Zone Imaging)**

Smart beam shape control and uniform energy distribution in entire zone area



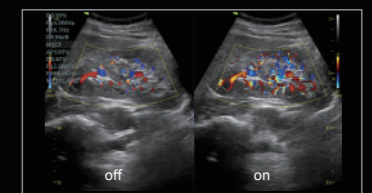
# Pure Wave Probe Technology

Better orientation delivers better penetration to difficult person



Traditional Probe

Pure Wave Probe



**VFlow+**

VFlow+ is an advanced adaptive filter technology of color flow from VINNO to enhance the detective sensitivity of tiny blood flow

The V10 portable ultrasound system has been thoughtfully designed to overcome the challenges from everyday healthcare environment.

With enhanced image quality based on VLucid 2.0 platform, well designed workflow and smart automation tools, V10 provides the best-in-class image quality and supports clinicians from Critical Care, Emergency and Anesthesia to General Imaging.

# Ergonomics



Built-in camera & microphone for remote solution



2 USB + 1 Type-C port



15.6" monitor



8" touch screen



External multi-functional holder



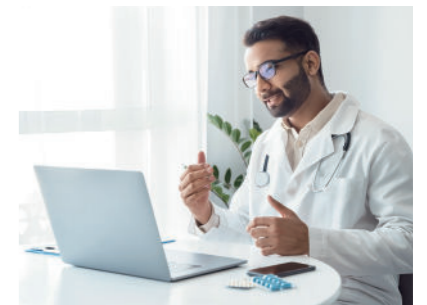
Built-in ECG port



"Touch-and-view" external battery status display (when powered off)

## FLYINSONO Remote Ultrasound Imaging Solutions

Flyinsono is the pioneer of Remote Ultrasound Imaging Solution. Endorsed by Cloud technology, Flyinsono can realize Remote Consultation, Intelligent Diagnosis, Remote Quality Control, Online Training, Remote Service, Academic Seminars and etc. Flyinsono breaks down geographical, traffic and personnel barriers, and provides real-time or time-sharing services to remote medical facilities.

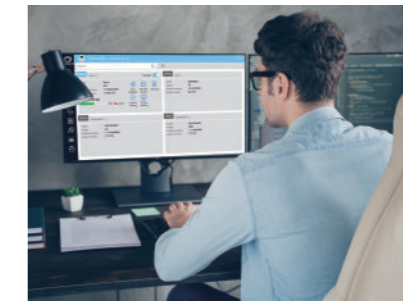


### Remote Diagnosis

- Real-time diagnosis
- Reviewed diagnosis
- Case sharing

#### Benefits for you:

- ✓ Increase diagnostic confidence
- ✓ Increase access to specialist care
- ✓ Increase doctor and patient satisfaction



### Remote Service

- System Upgrade with Patch
- Acquire log
- Image optimization
- DICOM setting
- Printer setting

#### Benefits for you:

- ✓ Real-time service for customer loyalty
- ✓ Save travel costs and time
- ✓ Increase service efficiency



### Remote Training

- Webinar and online training
- Extensive case-study free of charge

#### Benefits for you:

- ✓ Skill enhancement at your availability
- ✓ Reduce travel expenses and costs

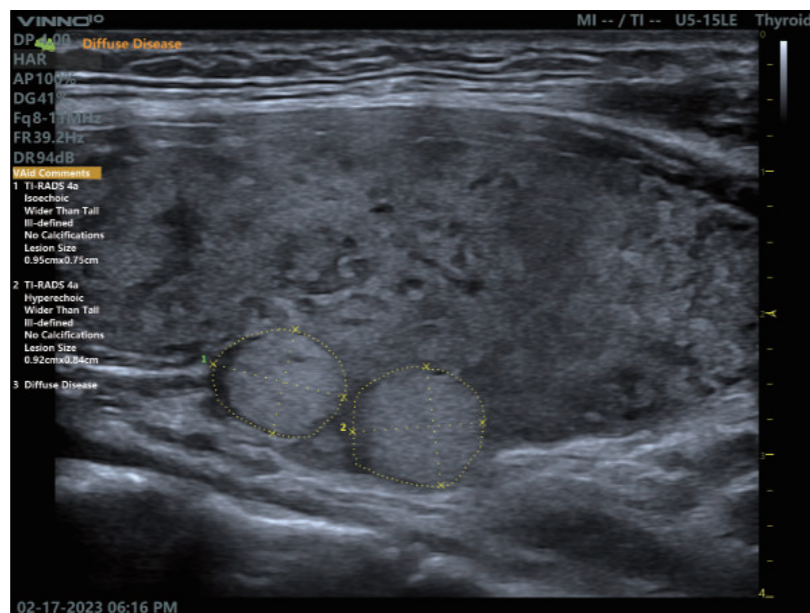


# Clinical Solution



## VAid Thyroid

VAid Thyroid provides a non-invasive approach for detection and assessment of thyroid nodules to avoid unnecessary interventions. It automatically detects and recognizes single or multiple lesions in real-time scanning or on stored images and cineloops and displays the size, border characteristics and TI-RADS classification of the lesion, which greatly improves the diagnostic accuracy and efficiency.



## VAid Liver

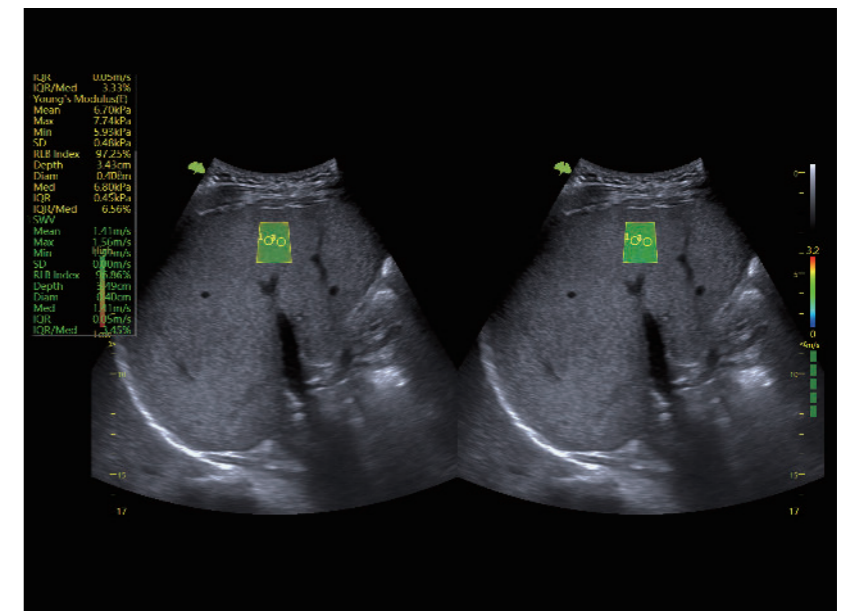
With just one-button-click, VAid Liver can automatically detect common focal and diffuse diseases of the liver in real-time or on stored images and cineloops and displays quantitative analysis of the lesion. VAid Liver significantly improves the efficiency and diagnostic accuracy in early screening and detection of liver diseases.



## VShear

### Shear Wave Elastography

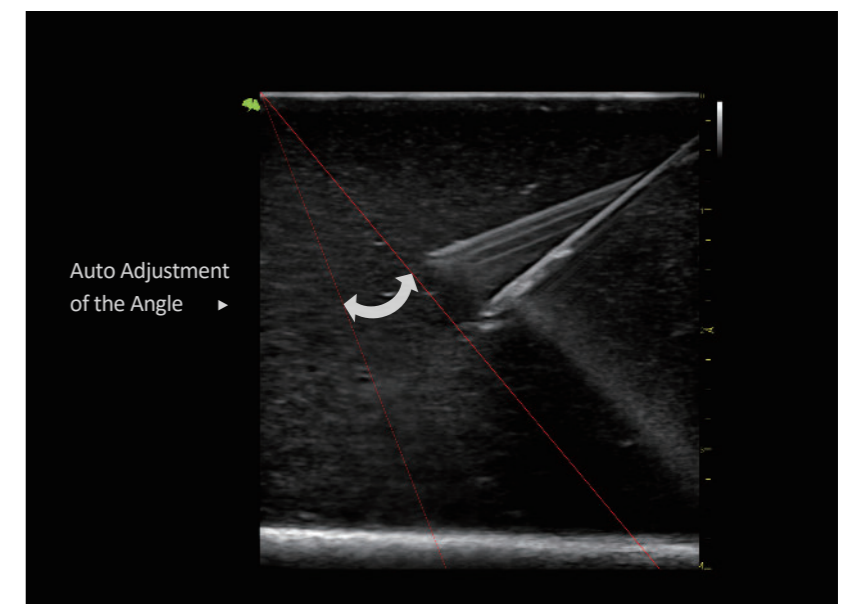
SWEI is a non-invasive assessment of stiff tissues in various applications. The color-coded elastogram, quantitative measurements, and user-selectable ROI functions are especially useful for accurate diagnosis of breast, liver, MSK, thyroid and prostate diseases.



## Auto Needle Enhancement

### Advanced Needle Visualization

Allows the needle increased visibility even during steep-angled procedures, while maintaining superior image quality. Improved confirmation of needle location in tissue minimizes harm to surrounding tissue.



# Innovative Design

## VINNO<sup>1</sup>

- Powered by advanced VLucid technology
- Excellent mobility to scan anywhere
- Premier imaging performance
- Dedicated and professional solutions
- Intuitive interface



Up to 3-probe Extension (optional)



Battery Indicator

The light indicator will be illuminated after the battery is set in place.



4 Probe Holders

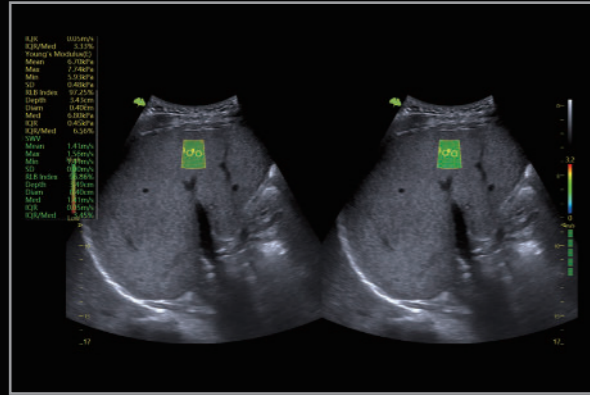


Battery Pack

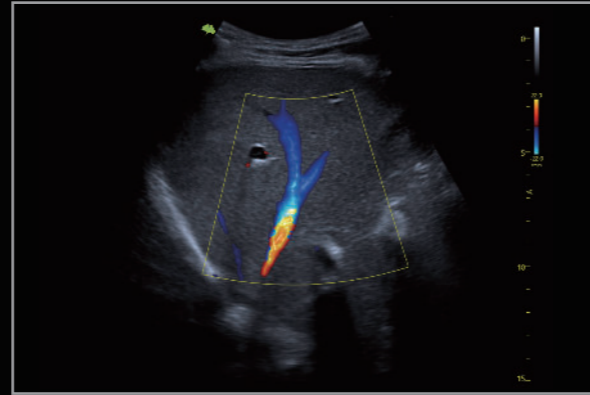
Backup battery inside the system supports 60-minute more working time for each pack of battery .



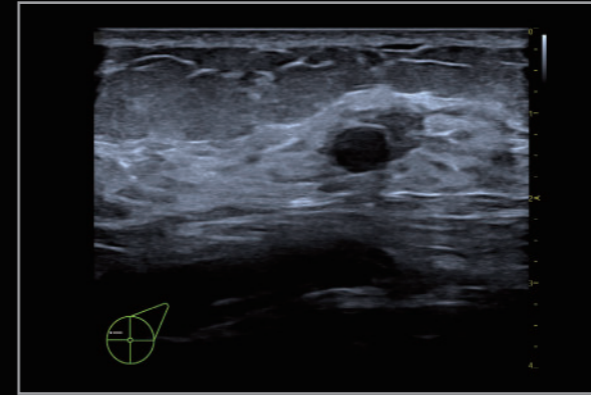
# Image Gallery



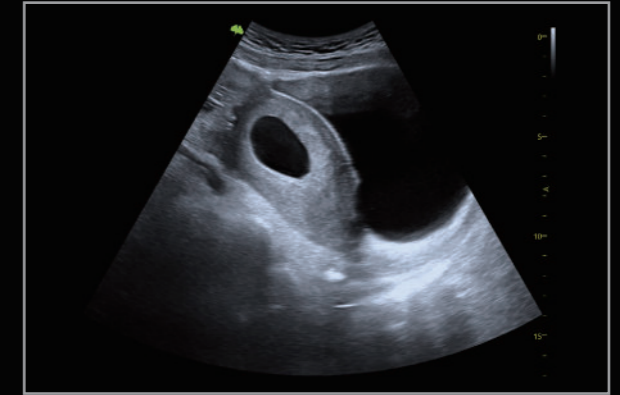
Liver Vshear



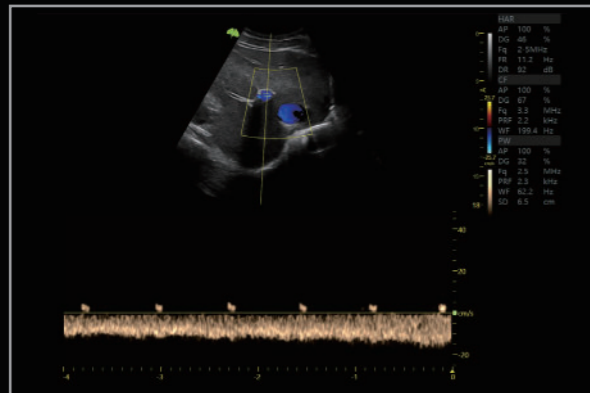
Liver CF



Breast 2D



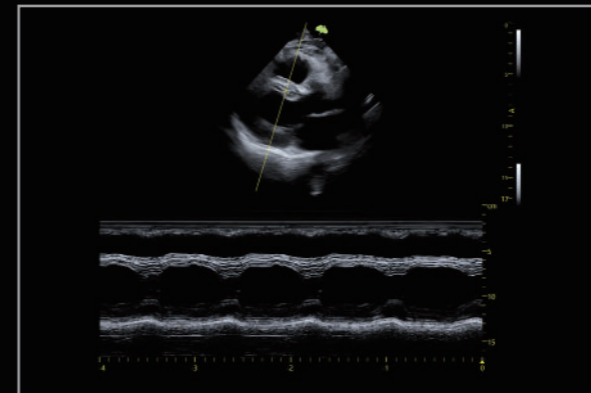
Early pregnancy



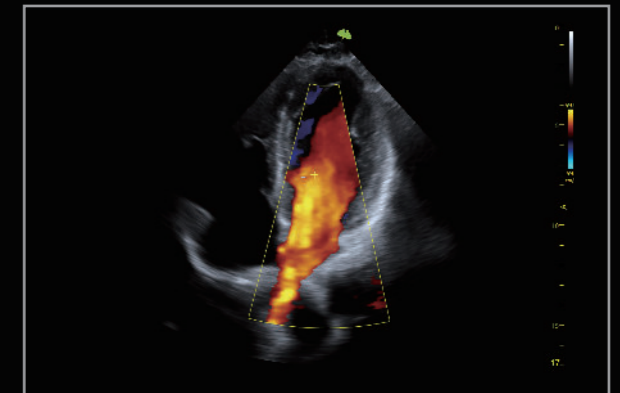
Liver PW



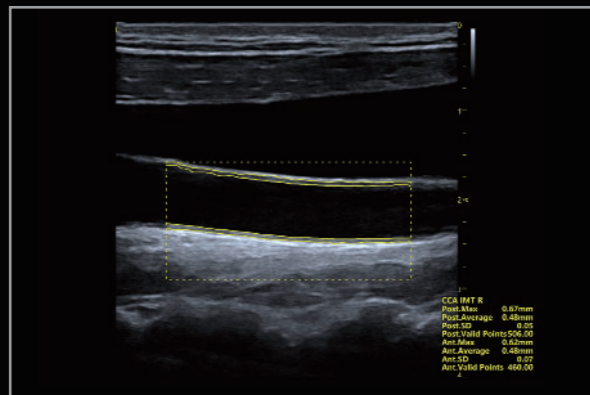
Kidney VFlow



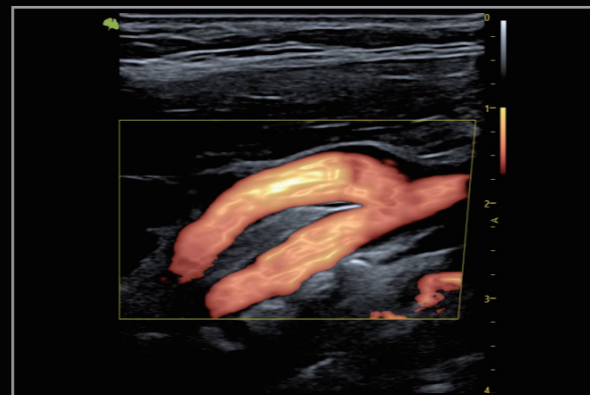
Cardiac M Mode



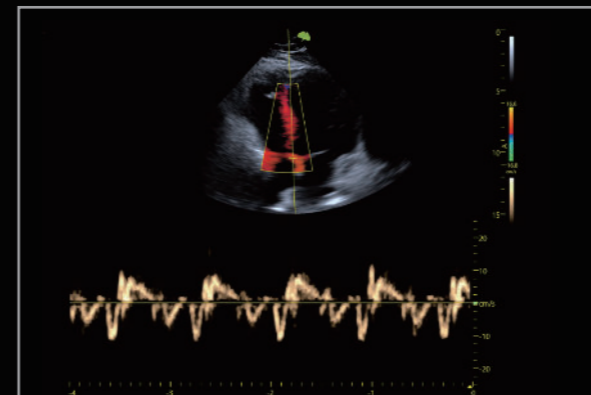
Cardiac CF



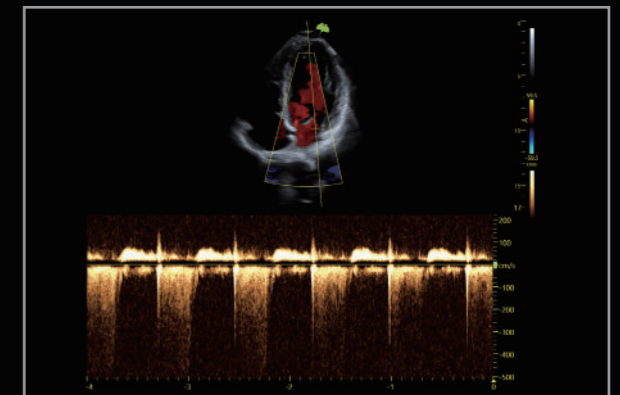
Carotid Auto IMT



VLuminous Flow



Myocardium TDI



Cardiac CWD